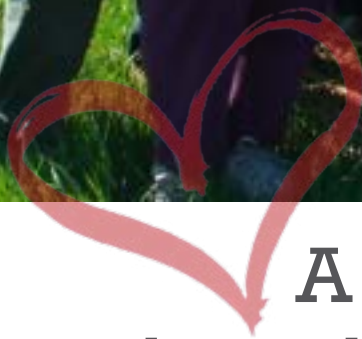


# Garden Greenway Learning Landscape



A community project  
located in the heart of Mt. Shasta, CA



Spring 2017

Siskiyou Land Trust

# SLT Garden Greenway



School children romp through the Garden Greenway in 2013 as they're asked to draw their vision for the space.

## Table of Contents

- 4-5 Vision and Support
- 6-7 Input and Achievements
- 8-9 Project Elements
- 10-11 Timeline and Budget
- 12-13 Considerations and Engagement
- 14-15 Project Funding Supporters
- 16 How to get Involved

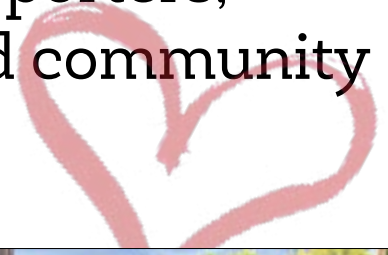
As a community-inspired project, the Land Trust allows for planning and vision to shift and respond to community input. This Concept Plan is a living document, meant to grow and change.



The GardenShare set the stage for the Garden Greenway vision. Here they are clearing the space and setting pathways and beds.

The Garden Greenway, in the heart of Mt. Shasta, is a project born of community vision and support. Thank you to all of our supporters,

**Thank you** volunteers and community partners.



The Garden Greenway Learning Landscape is a community hub that provides educational and gathering spaces, paths for connectivity, open green spaces and viewsheds, and spaces for growing organic food.

Born of a community vision, the Garden Greenway began with the GardenShare community garden and a dream of what this 2.98-acre open space could provide.

An enthusiastic local fundraising campaign in 2013 laid the foundation for the purchase of the land in January 2014. In becoming the stewards of this land, SLT and the community are conserving this open space that was approved for multi-unit housing development. Community paths, wildlife habitat, wetlands and open views were preserved.

In 2017, we are continuing our work to create and enhance elements of the vision for the landscape. That work includes installing infrastructure and physical elements that support community use and educational programming, as well as the enjoyment of the open space and views.



Members of the 2014 GardenShare appreciate the bounty of a fall harvest.

## Garden Greenway Guiding Principles

- Engage in planning and implementation rooted in community vision and participation
- Hold this space for community connectivity and complimentary use
- Maintain open spaces in balance with designed spaces for learning and gardening projects
- Engage in activities that support fresh air, clean water and outstanding views
- Enhance and protect wetlands and native habitat
- Plan for both human and natural communities
- Demonstrate active stewardship and conservation values

# Community Vision

With development on the horizon, an idea was born

## *What could have been...*

This 2.98-acre parcel was approved for subdivision and in 2012 it was on the real estate market for residential development. The Land Trust was renting the office space and the GardenShare was establishing its roots. Sitting at the nexus of several neighborhoods, SLT and the gardeners recognized the value in the soil, the viewshed and location relative to community. Paths running through the property showed that residents obviously crossed the land to connect to schools, the library, downtown and other trails. These informal community trails would be lost – along with the views, wildlife habitat and wetlands – if the space were developed.



*What could have been - a mock up of proposed development.*

“At the time that the Land Trust began to contemplate buying the land to save it from development, you had to have vision to contemplate this place as an idea,” recalls SLT conservation director Kathleen Hitt. “It was overgrown and weed choked; it wasn’t really beautiful. Having the garden anchored the idea for what is possible for the community, if someone would take the time to develop it for that purpose.

Knowing it was an approved subdivision and that it was for sale, made us act. It’s not a huge open space, but it is a meaningful one,” Hitt says.

## *The GardenShare gives root to a bigger vision*

The SLT GardenShare is a volunteer stewardship project that embodies SLT goals of supporting the ability to grow food locally in a way that benefits the land as well as the community. GardenShare volunteers feed their families and others in the community who are in need of wholesome, fresh food.

When SLT was renting its present offices, a group of community members worked with the owner, David Reese, to start the GardenShare. The gardeners decided to work collectively, rather than independently. In doing so, they show what’s possible: how we can work together in a garden reflects how we can work together in community. In the six years since the garden started, the group has learned, worked, planted, harvested and dreamed together, as well as sharing that harvest with people in need. And in those years, they have become true caretakers of this place.



*Garden Share members and supporters in 2010*

# Community Support

## Residents leap into action to raise funds and energy

Once the Land Trust decided to purchase the property, it chose to involve the community in fundraising to cultivate the ownership of this community space. As a public conservation project, SLT wanted to give the community to true voice in the process.

The SLT board set the audacious goal to raise half of the \$325,000 purchase price through community fundraising. The landowners had agreed to take the property off the market for a short time and the Land Trust wanted to act quickly. The board settled on a campaign strategy and went to work to raise \$150,000 in six weeks.

It began with a few anchor donors, then a handful of medium donors. Then went out to the community and enthusiasm for fundraising swept up the people of Mt. Shasta. An anonymous donor provided a \$75,000 match for every dollar raised and the community responded with unanticipated support! It became this ridiculous, fun, fundraising event.



*The Berryvale quadruple your dollars event raised just over \$27,000 in a few short hours.*

### *Community support is contagious...*



*Wholesale Solar's event at the 4th of July raised \$20,000.*

Double your dollars become quadruple your dollars when Berryvale Grocery came forward with a \$5000 challenge grant. The fundraising event in front of the store inspired the community and within just a few hours, the \$5000 match was met. A lot of the kids who had already drawn their vision for what this place could be told their friends and stood outside of Berryvale to tell their story.

That inspired a second quadruple your dollars event at 4th of July, sponsored by Wholesale Solar. We thought that we would get out of town folks, but it was the locals who came out again. Wholesale Solar's \$5000 match was quickly met.

After a tremendous summer of fundraising, the purchase agreement in order and a deadline of December 2013 to finalize the purchase, the Land Trust was still short \$25,000. The call went out to the community and an angel donation of \$22000 made the purchase happen.

# Community Input

## All ages engage in visioning the landscape

The Land Trust made it a priority to involve the community in envisioning the Garden Greenway landscape. We facilitated input in a number of ways that have been incorporated into the stewardship plan for this space.



*Elementary and middle school students drew their visions for the landscape.*

Community input and engagement elements:

- ♥ Groups of children got together and drew pictures of what they envisioned, shared that story with their families and friends and participated in fundraising.
- ♥ Kids got out on the landscapes and were asked to draw their visions of the land, included giving them black maps so they could draw in what they saw
- ♥ At community meetings folks gave input on what they saw for the landscape and generated a potential project list. The Land Trust shared its concept and asked folks to tell us if we were missing something.
- ♥ Teachers gave input about how they could use the landscape. The Land Trust held special meetings with teachers to walk the land to ask what they need. Some teachers started using it as soon as escrow closed.
- ♥ By sharing what we've accomplished during our SLT annual meeting, we've received feedback from members.
- ♥ SLT hosted site visits with local partners who might have projects through the landscape, including school districts, the library, City staff and the City's Active Transportation Committee.
- ♥ One on one input has come from the many people who were invited to the office to share their vision and walk around the property. SLT shared our immediate infrastructure concepts to hold the space for our vision. We also had people just walk in the door of the office and give their ideas or dollars.

### Community Proposed Projects & Ideas

- Create a space where school kids feel a sense of ownership
- Outdoor lab and demonstration area for nature/outdoor/native skills; hands-on projects; gardening, permaculture, water conservation, etc
- Early childhood education sensory area with sand, natural tunnels, logs, rocks to move, things to crawl on/under/thru/over
- Canopy cover with tables/spaces
- Afterschool care facility
- School garden – plant in spring, low maintenance summer, students harvest in fall
- Orchard with mixed/cross pollinated fruits
- Community compost area
- Outdoor cooking/wood-fired oven
- Sculpture garden or display of rotating nature based sculpture
- Workshops – organic gardening, straw bale construction, natural art projects, etc
- Interpretive center/outdoor education for self-guided tours

# Community Achievements

## Volunteers dig in to lay the foundation

Our community volunteers are the heart of the Garden Greenway. Hundreds of hours of volunteer time and in-kind donations have made our achievements happen. Several dozen volunteers have helped bring the vision of trails and connectivity to the landscape, while a core of GardenShare members continue demonstrating stewardship through organic, sustainable gardening and water conservation.



*Brian Gorey, right, and Mark Telegin smoothing out trails.*

## Celebrating our achievements

### 2014 Achievements

- General property cleanup
- Interior building renovations
- GardenShare growing and community programs
- Informal use by schools

### 2015 Achievements

- Thinning trees and clearing brush
- Trail set from Rockfellow/Alma entrance
- Fence built at Rockfellow/Alma entrance
- Trail cleared from Alma/Birch corner
- Trail cleared and set for Edible Alley
- Wood chips on Rockfellow entrance trail
- Community using the trails!
- Summer Celebration party at the Greenway
- GardenShare adapts to low-water year
- Informal use by schools

### 2016 Achievements

- Install water line for GardenShare
- Install trail sign at Rockfellow/Alma entrance
- Plant first Community Orchard tree
- Energy efficiency upgrades to office building, including a new roof, windows, attic insulation, stucco and brick repair and other improvements thanks to a grant from The McConnell Fund of Shasta Regional Community Foundation
- Education outreach to education partners thanks to a grant from the Pacific Power Foundation
- Thinning trees and clearing brush
- Add more wood chips for trail surface



*John Brennan, Mark Hanson, Jack Moore and John Harch using the chipper to repurpose branches and limbs.*



*SLT volunteers and friends from the Mt. Shasta Trail Association add fresh woodchips to the main trail.*



*Siskiyou Land Trust board and staff celebrate the energy efficiency improvements made to the office building.*

# Making it happen

## Garden Greenway Project Elements

In 2017, we look to begin projects and programs in support of these elements:

### Education

In support of the educational use of the Garden Greenway, restrooms and drinking fountains for students will be built. In the future, the present Land Trust office may be converted to spaces that support and house learning program staff and volunteers.

Educational programs for children and community include:

- **Partnerships and programs with local schools and Boys and Girls Club of the Siskiyou** to support outdoor education on the Garden Greenway.
- **School garden with greenhouse** for learning about growing local food in the seasons that students are in school.
- **Outdoor learning spaces** that provide open areas where teachers can present curriculum in a natural setting. In addition, an outdoor gathering space will provide a place for classes to sit together for presentations.
- **Natural play area** where young children can have unstructured play time on natural objects, like rocks, logs, and grassy areas under trees. This concept will provide a play ground where parents can engage in playing outside with their children.

### Connectivity

Siskiyou Land Trust is part of a broad partnership between the Mt. Shasta Greenway Consortium, the City of Mount Shasta and its Active Transportation Committee to develop the Midtown Trail. The trail segment that crosses the Garden Greenway also lies on adjacent City property.

Connective elements support the community's use of this land as a place where pre-existing trails connect neighborhoods to resources.

- **Neighborhood trails** cross the Garden Greenway to connect residential areas to schools, the library, Sisson Meadow, downtown and other area trails.
- **The Midtown Trail** segment through the Garden Greenway is a hub of the Midtown Trail, a concept for an alternative transportation trail that runs the length of Mt. Shasta that will ultimately connect to the nearby towns of Dunsmuir and Weed.
- **Outdoor community gathering space** for learning and connecting.
- **Connections to Sisson Meadow and the Rotary Trail** are in place from the Garden Greenway to extend the opportunity to walk trails in the middle of town.





## Local Food

In its conservation work, the Land Trust often works with agricultural landowners who produce food. That conservation value is demonstrated here on a smaller, community based scale as part of our commitment to supporting food producers.

The practice of growing food locally with sustainable, organic, water-conserving practices is demonstrated on the Garden Greenway in several ways.

- **The GardenShare** is a unique community project in which a team of gardeners grow collaboratively. Their harvest feeds their families and those in need in the community.
- **Edible Alley** makes use of the blackberries growing on the property and will be enhanced with other berry bushes to create an edible landscape.
- **A Community Orchard** will provide fruit and a sense of connection as school children and residents engage in planting and caring for fruit trees.
- **Facilitating community workshops** to share the local knowledge base of food growing methods and to encourage food growing projects at home and in partnership.

## Conservation

Land conservation is a guiding principle for all of the work the Land Trust does on all of the various scales it works on - from a 3-acre parcel to a 6,700-acre ranch. Bringing conservation values forward here provides a microcosm of what SLT does.

The Garden Greenway provides an opportunity to demonstrate conservation ethics in an urban setting.

- **Habitat conservation** on the wetlands areas will enhance and protect resources that are important to wildlife. Certain areas will undergo wetlands enhancement activities.
- **Native plant communities restoration** in certain areas will remove those invasive species that we're so familiar with and replace them with native plants.
- **Open space and viewsheds** are maintained by keeping this space open and free from development.
- **Long term stewardship of agricultural land** is an element of caring for this space, which was historically a farm.

# Seeing it on the Land

## Garden Greenway Project Phases



### Phase 1: 2013-2014

#### Community Input

- Surveys, site visits, school children visits, teacher input
- Partner organization input and community meetings; integration of community input

#### Fundraising Acquisition

- Local fundraising campaign raises \$150,000 in 6 months
- Property purchased with owner financing

#### Spaces and Infrastructure

- Garden Share stewardship of garden and compost areas
- Project planning; landscape clean up and improvements to building interior

#### Programs and projects

- Garden Share members grows food together and to share with the community
- Informal school use for outdoor education - teachers bringing students for projects in various curriculum areas

### Phase 2: 2015-2020

#### Community Input

- Community meetings, feedback at SLT annual meeting
- Teacher input based on informal use to date; collaborate with Boys & Girls Club of the Siskiyou
- Teacher, administrator, student and parent input on school garden concept

#### Fundraising Acquisition

- Pursue grant funds and fundraising for purchase completion by 2018
- Complete purchase for total acquisition price

#### Spaces and Infrastructure

- Trail, edible ally and outdoor learning space rough in; vegetation thinning, City installed sidewalks and crosswalks
- Gardenshare water and fence installation; trail rough in; exterior building improvements, City water connection on Rockfellow; Orchard phase 1
- Public bathrooms build out; outdoor learning space build out; full irrigation system installed; Edible Ally phase 2

#### Programs and projects

- Begin coordinating with teachers to develop future educational partnerships, projects and events.
- Launch outdoor placed-based education projects and experiential curriculum in partnership with local schools; host on site educational events like Science Friday
- Host place-based community education events and workshop series

### Phase 3: 2020 and beyond

#### Programs and projects

- School garden, greenhouse and outdoor learning tools build out; Orchard phase 2; Midtown Trail concept design
- Midtown Trail funding; Garden Greenway trail hardscaping
- Midtown Trail build out; public art installations
- Habitat restoration and ongoing stewardship

# Community Considerations

Guideposts people held while considering the idea

## open spaces

for people to root a sense of connection to nature and for wildlife habitat that supports health and connectivity

## organic gardening

to feed our people in a way that benefits the earth and to provide demonstrations so others can learn

## greenway

a place that provides open green spaces for all species and pathways for human travelers

## connectivity

of people and neighborhoods to common destinations and of wildlife living in and around an urban area

## viewshed

preserving the view of the mountains and blue sky around us

## conservation

of natural spaces, clean air and water, habitats for birds and wildlife, open spaces in an urban landscape

## stewardship

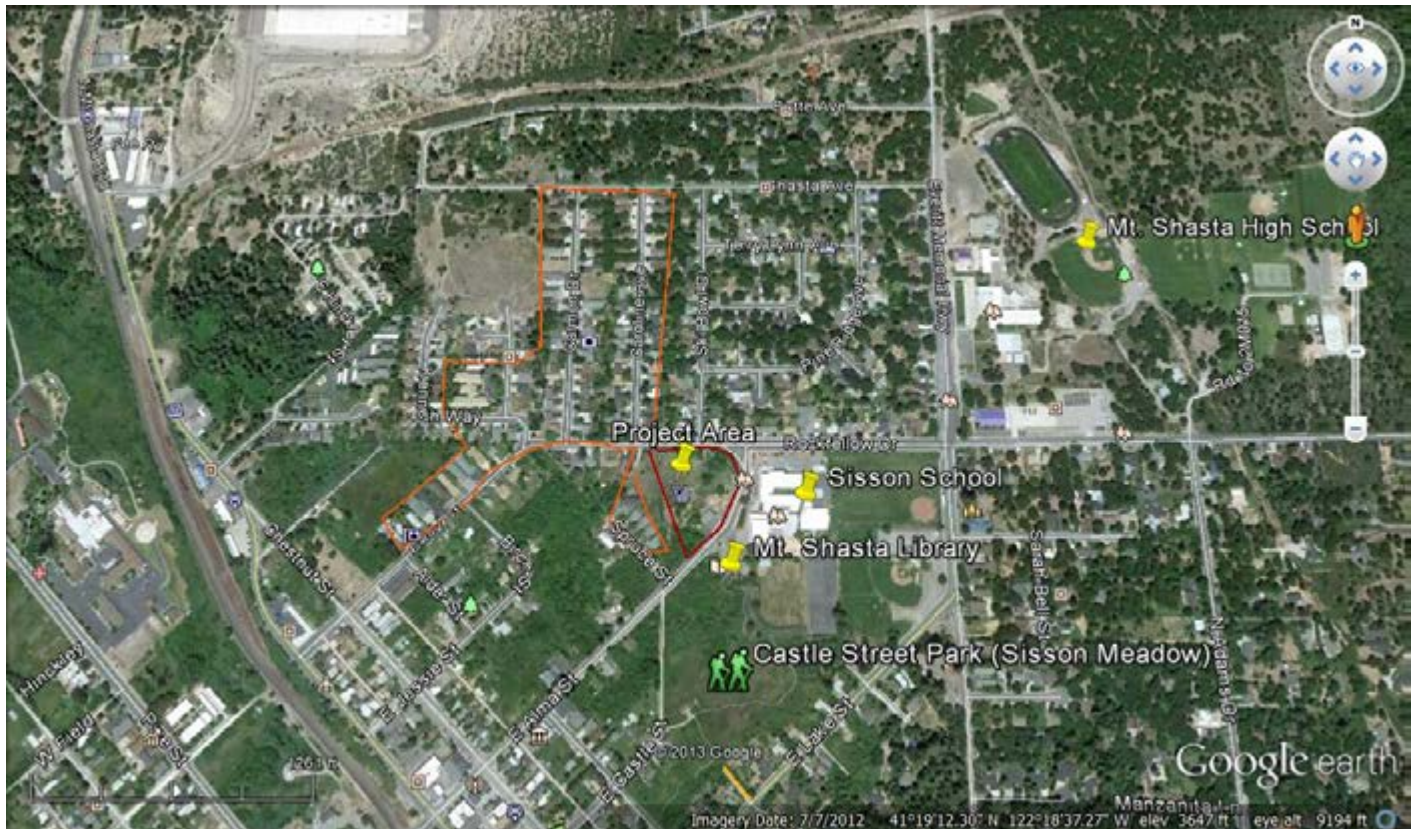
long term care for natural communities enacted together

## restoration

honoring the land by returning it to its natural state, with native plant species and minimal interference

## education

for people of all ages to learn about the natural world, our connections and our responsibilities and opportunities



# Community Engagement

## People embrace the Garden Greenway

The community has embraced the Garden Greenway in a number of ways. Now that the trails have been set, people of all ages from the surrounding neighborhoods are using them. The summer of 2015 saw the edible alley carved just in time for blackberry picking.

The 2015 Summer Celebration drew residents from all around to this party thrown in appreciation of how the community has embraced the Garden Greenway. Old friends and neighbors who were curious about what was going on came down to participate in tours, listen to live music and enjoy the potluck style dinner put on by dozens of enthusiastic volunteers.



*In September 2015 the community came together to celebrate the Garden Greenway and our collective achievements.*

## Garden connections

Community engagement on the landscape includes the year after year stewardship of the GardenShare members and their programs and events that bring the public to the garden. Gardener Bayla Greenspoon arranged the "Music in the Garden" series that was co-sponsored by the Mt. Shasta Community Resource Center.



*Pre-schoolers learned about where their food comes from with Bayla Greenspoon (on guitar). They sang songs about fruits and vegetables, toured the beautiful garden, and munched on fresh beans, kale and strawberries that they got to pick themselves!*



## Youth on the landscape

Teachers and school children were one of the first groups to embrace the Garden Greenway for outdoor education. Several Mt. Shasta schools have brought students to the landscape for math, science, writing and art lessons.

In 2016, Mt. Shasta High School senior Hannah Pardee's senior project was focused on the Garden Greenway and working closely with SLT's conservation director, Kathleen Hitt. As part of her project, Hannah planted the first fruit tree of the Community Orchard - a Gravenstein apple.

# Thank you to everyone

who donated to the 2013 acquisition campaign

## Up to \$99

Dorian Aiello  
Nadine Aiello  
George Ainsworth  
Christie Albouy  
Marge Apperson  
Jeanie Atwater  
Laurel Barrett  
Jason and Christina Benz  
Michelle Berditchevsky  
Paul and Cheryl Boerger  
Mim and Mel Bottner  
Faith Boyarin  
Jim and Molly Brown  
Scott Buecher  
Jerrie Bullerwell  
Brandy Caporaso  
Kristin Carter  
Joanna Cherry  
Jill Chamberlin  
Julian Colescott  
Margaret Conard  
Peter and Joan Conlan  
Elmer Contreras  
Angelina Cook  
Pam Cundy  
Sam Davidson  
Lana Denning  
Mark and Debbie Derby  
Debbie Desrochers  
Rosemary Dyke  
Angela Escamillas  
Melanie Findling and  
Bob Damschroeder  
Lon and Liz Fitton  
Rebeca Franco  
Nancy Gandrau  
Jill Gardner  
Audra (Gibson) Beylik  
Ann Goldsmith  
Joel Goodman  
Mollie Grace  
April and Dana Gray  
Hinda Greenspoon

Lee Griffiths  
Keith Hamrick & Jennifer Lovrak  
Justi and Leif Hansen  
Kathy Hansen  
Jerry and Nancy Harmon  
Doris Harvill  
Susan Heilmann  
Eric Heitz  
Steven and Lydia Hobbs  
Joy Hosey  
Raymond and Jane Huston  
Anne Johns  
Dennis Johnson  
Kim Johnson  
Paula Johnson  
Brennan Kane  
Deborah Katz  
Hari Khalsa  
Rick Knight  
Diane Kirwin  
Chantal Langenfeld  
Eric Lashbaush  
Nicole Letscher  
Cate Lewis  
Lynn Lloyd  
Barry Lopez & Debra Gwartney  
Ethan Mandelkern  
Frances Mangles  
Michael Stewart & Leslie Marconi  
Wenham Margy  
Kim Mattson  
Sherril Mattson  
Terry and Tony McCauley  
Gigi McClain  
Lorrie McClain  
Casey McClung  
Roslyn McCoy  
John McDermott  
Richard McDowell  
Terrence McGraw  
Karol McGuire  
Atara Melo  
Geri Metz  
Lesa Michel  
Lauren and Stan Miller

Harold Miller  
Cynthia Millinger  
Marie Mitchell  
Patricia Moss  
David and Cedar Moss  
Mount Shasta Commons  
Maria Murphy  
Kimberley O'Donnell & Ryan Neely  
William Nelson  
Christine O'Brien  
Frances Oliver  
Eric Olson  
Shawn Oswald  
Fred Pasner  
Sandy Patterson  
Jennifer Payton  
Bonnie Pearson  
Flora Perlman  
Mike Porter and Susan Smith  
Neil and Stephanie Posson  
Erika Rein  
Kenneth Ryan  
Linda Ryan  
Rich Renouf and Susan Keeler  
Touson Saryon  
Art Scharf  
George Schevon  
Jane Seeley  
Shantam Sheptow  
Adele and Fred Simon  
Nathan and Susan Sivananda  
Myr Skipper  
Stacy Smith  
Susan Smith  
Michael and Jane Sojka  
Kathleen Spikes  
Jeff Stone and Kathy Pitts  
Kirsten Stroud  
Sarah Sunshine  
George and Bonnie Thomas  
Gentle Thunder  
Justin Tucker  
Robin Tyler  
Ky and Holden VanLaeken  
Steven Van Sant

Suzanne Van Summern  
Michael Walsh  
Laurel Houghton & Lee Warner  
Linda and Dave Webb  
Marie Wells  
Margy Wenham  
Gregory Werner  
Thamar Wherrit  
Thomas Wick  
Bella Williams  
Denise Willey  
Donna Wolfe  
Kate Yorke  
Randy Zandona  
Shasta Visions  
Sports and Spirits  
12 Anonymous Donors

## **\$100 - \$250**

Sherry Ackerman  
Kevin and Michelle Andras  
Kara Baylog  
Ernie and Marsha Behm  
Meg Benedicte  
Kristy Bond  
Randy and Donna Boyd  
Chris and Jenn Carr  
Barbara Clark  
Neal and Benita Clark  
Susan Cliff  
Mark and Robin Clure  
Jane and Alan Cohn  
Lawrence and Elizabeth Collord  
Christy Corzine  
John Cunningham  
Richard & Jackie Derwingson  
Mira El  
Kristofer and Marsha Ellingson  
Chitwood Energy  
Kathy and Don Fitzgerald  
Mark Foster  
Dawn Fryling & Bill Odegard  
Victoria Gold  
Steven Greenspan  
Bayla Greenspoon  
Bob and Libby Hall  
Jim and Lynda Hardy  
Joseph and Kathleen Heller  
Belinda Higuera

Ana Holub  
Neil Jacobs  
Daniel Kealey  
Buzz and Jennifer Knight  
Kate and Bill Korbel  
Paul Lennon  
Fred Lewis  
Sean and Yvonne Malee  
Mary Marcina  
Jennifer Mathews  
Mattole Charter School  
Kerry and Eleanor Mauro  
Dennis and Sally McFall  
Anne McTavish  
Mt. Shasta Bioregional Ecology  
Center  
Carolyn Napper  
Native Grounds Nursery  
Katie O'Halloran  
Andrew Oser  
Jim Parker  
Barry and Joy Price  
Peggy Reisch  
Nick and Pat Satariano  
Scott Valley Bank  
Siskiyou Medical Group  
T & K Scovill  
Erika and David Simon  
Tim Sterns  
Thomas and Karen Taylor  
Joy Taylor  
Mark Telegin and Jean Bicocca  
Jay and Eve Thompson  
Ed and Barbara Valenzuela  
Megan Wargo and Don Olsten  
Tom and Laraine Wearing  
Canada and Robert Winters  
3 Anonymous Donors

## **\$251 - \$500**

Bearfoot, Inc  
John and Lori Harch  
Katie Jessup  
Headwaters Ultra Marathon  
Kathleen Hitt & Tristan Behm  
Roger Kosel  
Bob and Laua Manley  
Connie Marmet  
Chris Marrone Construction

Vic and Carol Medrano  
Greg and Chris Messer  
Mt Shasta Chamber  
of Commerce  
Jean Nels  
Pam Newman  
John Sangrenetti  
Jan Schrag and David Vogt  
Spring Hill Nursery  
Theodore Swartz  
Michael Zanger

## **\$501-\$1000**

Susie Boyd  
John and Susan Brennan  
Chitwood Energy  
Gene and LaVada Erickson  
Jack Moore  
Jane Robertson  
John Schuyler  
Marc Williams  
Michael Williams  
Anonymous Donor

## **\$1001-\$2500**

Sam and Kris Baxter  
Robert Corcoran  
Joe and Michael Wirth  
Anonymous Donor

## **\$5000+**

Berryvale Grocery  
Mark and Ellen Coleman  
Sean Doyle  
Susan Goldschmidt  
Jane Riggs  
Anonymous

*If we miss spelled your name or failed to include your name, know that we deeply appreciate your support. Please contact us so we can correct our records.*

# Get to know SLT



## What we do

### Land Conservation and Stewardship

Siskiyou Land Trust protects land directly by buying or accepting donations of land, conservation easements, or other instruments such as a trail easement. Once we own land or an easement, we become responsible for seeing that it is conserved according to established objectives. This is accomplished through annual monitoring of the land and as needed stewardship activities. This ensures that the promises to protect are kept.

### Education and Outreach

As a land conservation organization, we love to connect people with landscapes. The Garden Greenway Learning Landscape is the heart of our work to connect school children and people of all ages to outdoor learning opportunities. Our outreach and education committee works to share places and experiences with residents and visitors through field trips, slideshow events, workshops and partnerships with schools. In 2016 we began to grow our field trip programs and our annual winter slideshow series shares stories of landscapes from around the world.

### Community Projects and Partnerships

Siskiyou Land Trust does its work in the context of our communities and it is through partnerships and collaboration that lasting contributions are made. SLT works with partner organizations, schools, agencies, community groups and individuals to make things happen together. Our commitment is to land-based projects that create or maintain open spaces, support trails and greenways and connect people to nature. We often offer our expertise and resources in support of partner organizations working on large projects.

## Conservation achievements

SLT's goal is to conserve 20,000 acres by 2020. Here's where we stand at the end of 2016:

**Conservation easements:**

7 easement covering 6,890 acres

**Owned Lands:**

4 sites holding 83 acres

**Greenway/Trail right-of-way easements:**

3.5 miles

## Member supported

Siskiyou Land Trust is largely supported by its members through financial donations, volunteer labor, and in-kind donations. You can support SLT by becoming a monthly supporting member, with an annual gift, by donating to a specific project, through planned giving or with your time, energy and creativity. Visit our website to sign up for our e-newsletter and to become a financial supporter of SLT.

# Thank you for sharing the vision



## Siskiyou Land Trust

Siskiyou Land Trust is dedicated to

- Preserving ranchlands, rivers and forests in Siskiyou County
- Building community projects and conserving open spaces
- Creating programs that connect people to nature

Become a Member **Join Us!**

Our volunteers are the heart of Siskiyou Land Trust. Help support the work you love by becoming a member or renewing your membership.

Call, stop by the office, or join online at [siskiyoulandtrust.org](http://siskiyoulandtrust.org)



522 Alma Street  
PO Box 183

Mt. Shasta, CA 96067  
530.926.2259

[siskiyoulandtrust@gmail.com](mailto:siskiyoulandtrust@gmail.com)  
[www.siskiyoulandtrust.org](http://www.siskiyoulandtrust.org)

**Learn about our work and ways to get involved  
at [www.siskiyoulandtrust.org](http://www.siskiyoulandtrust.org)**